

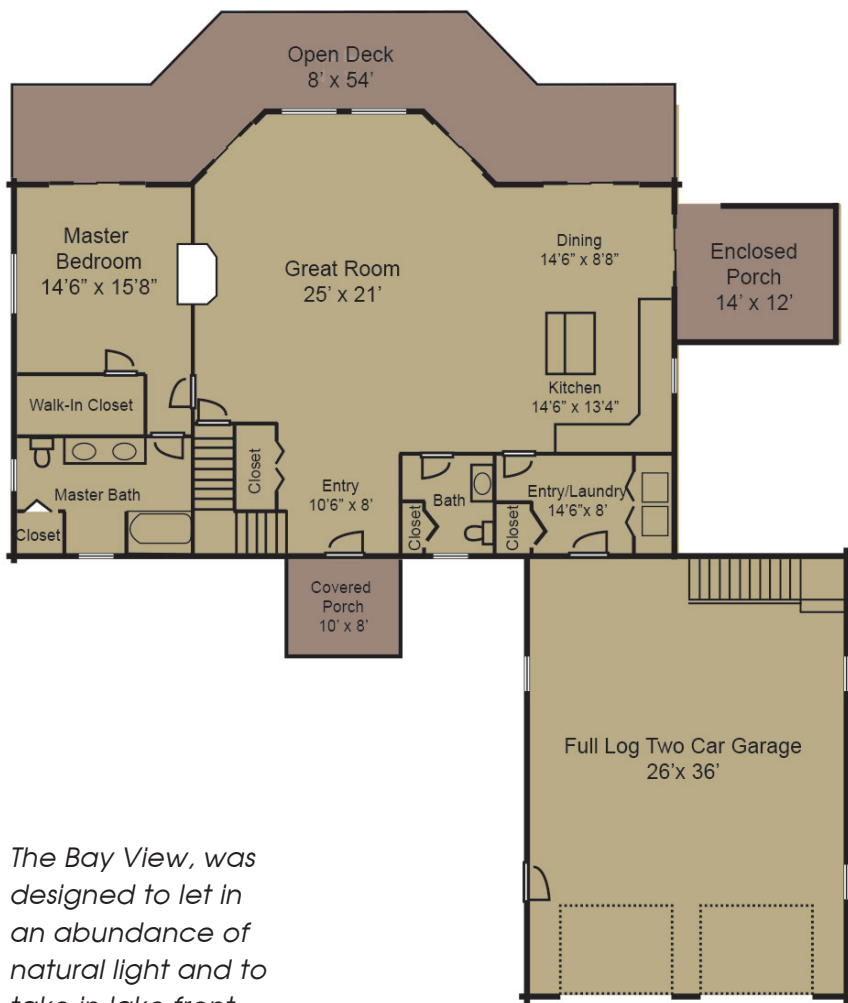


the Bay View

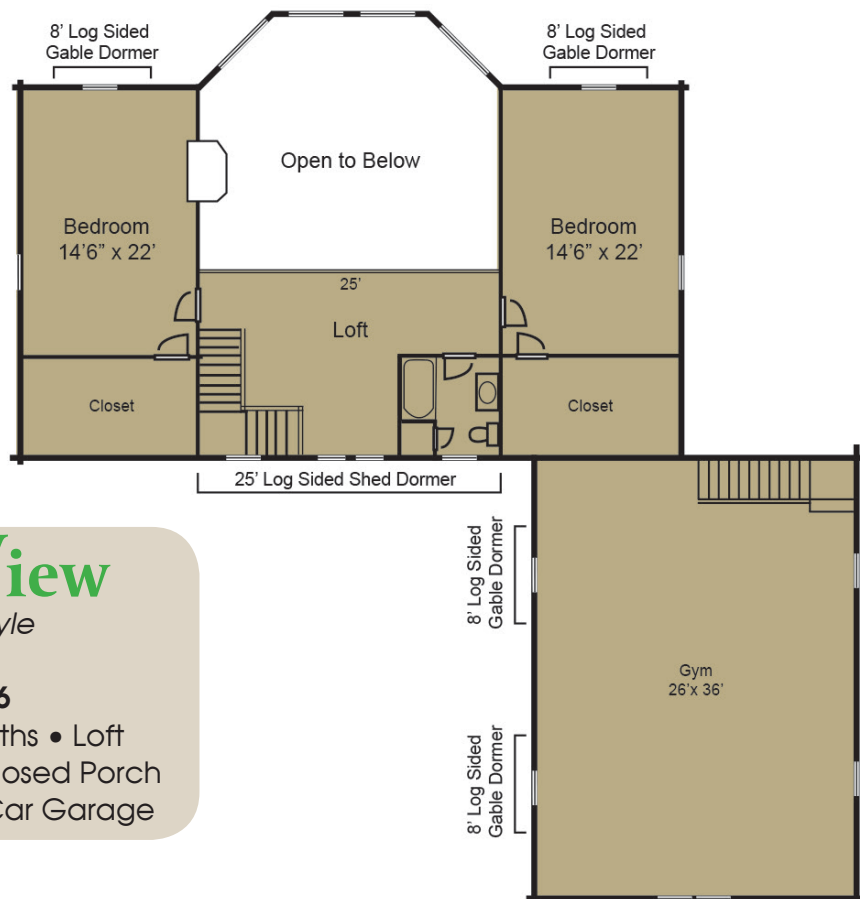


3D Views





The Bay View, was designed to let in an abundance of natural light and to take in lake front views from every room. This home accomplishes these design challenges with elegance.



the Bay View

Tradesman Style

2,975Sq. Ft.

30x54 & 25x6

3 Bedrooms • 2.5 Baths • Loft
8x54 Deck • 14x12 Enclosed Porch
10x8 Porch • 26x36 2-Car Garage